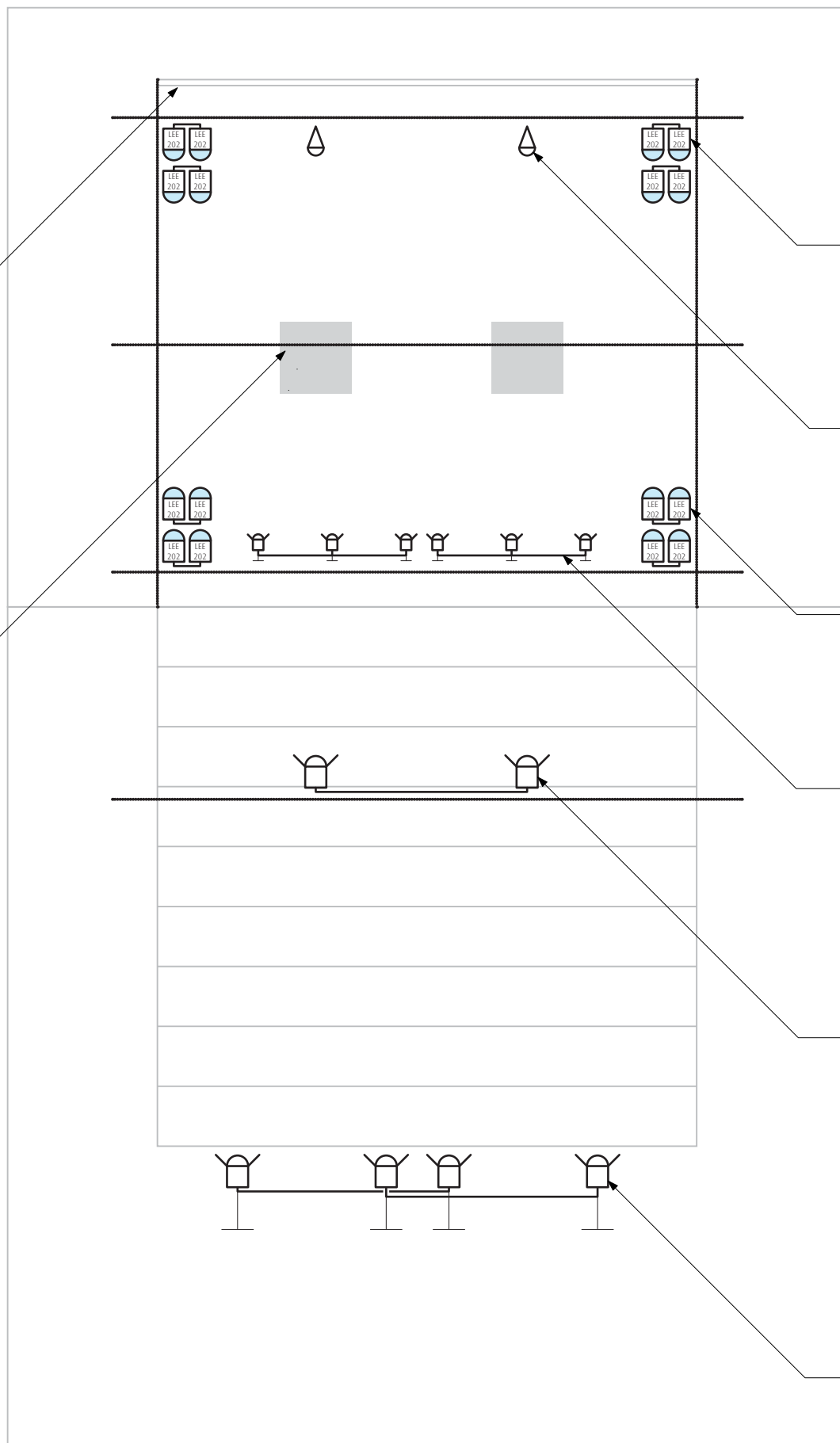


Projection surface behind the stage 16:9, cca 9 x 5 m.

2 retroreflexive "Squares" (stage design), 1.2 x 1.2 m.



2x 2 PC 1KW paired w. LEE 202.
Positions at the top corner of the stage.
Focus on front / back half of the stage.

2 separate PAR 62 or PC 1KW.
Position top behind the "Squares".
Focus on "Squares" at the stage.

2x 2 PC 1KW paired w. LEE 202.
Positions at the top corner of the stage.
Focus on front / back half of the stage.

2x 3 PC 500W grouped w. barndoors.
Position in front of the audience
(low floor stands).
Focus on "Squares" at the stage.

2 PC 1KW paired
FOH position.
Focus at the front part of stage,
face lighting.

2x 2 PC 1KW paired w. Barndoors.
Position low behind the audience
(high stands or low balcony positions).
Focus on "Squares" at the stage.

Objekty výskumu
Objects of research
Petra Fornayová

8.FEB.2014, A4 - Bratislava

Stage & Lighting design
contact:

Ján Ptačin
jan@ptacin.com
+421911861106

We have:

Stage design:
2 x retroreflexive "Squares"
Double sided tape
to fix them on the floor.

Video projection:
PC (audio & video output).
PC (audio output).

Sound:
2 identical CD
with standard audio tracks.

We need:

Lighting design:
22 x PC 1000W
6 x PC 500W
2 x PAR / PC 1000W

Video projection:
Projection surface / screen / white wall,
16:9, the bigger the better.
Dataprojector with total blackout possibility
(mechanical cover system).

Sound:
2 x CD player with timers
(alt. 1 CD player & our PC)
Standard theatre sound system.